



2025 Bombardier Challenger 3500 S/N 21062

2025 Bombardier Challenger 3500 S/N 21062

Offered at

Make Offer

Aircraft Highlights

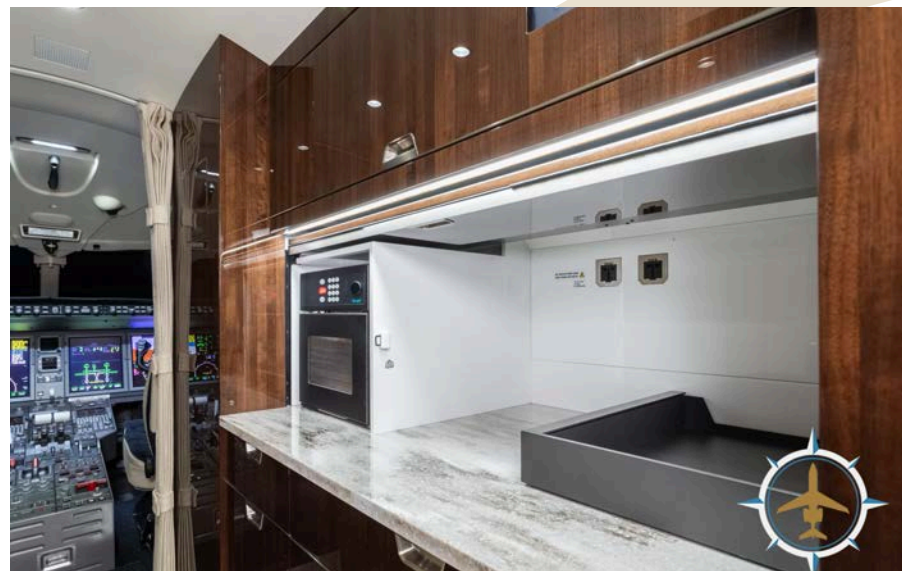
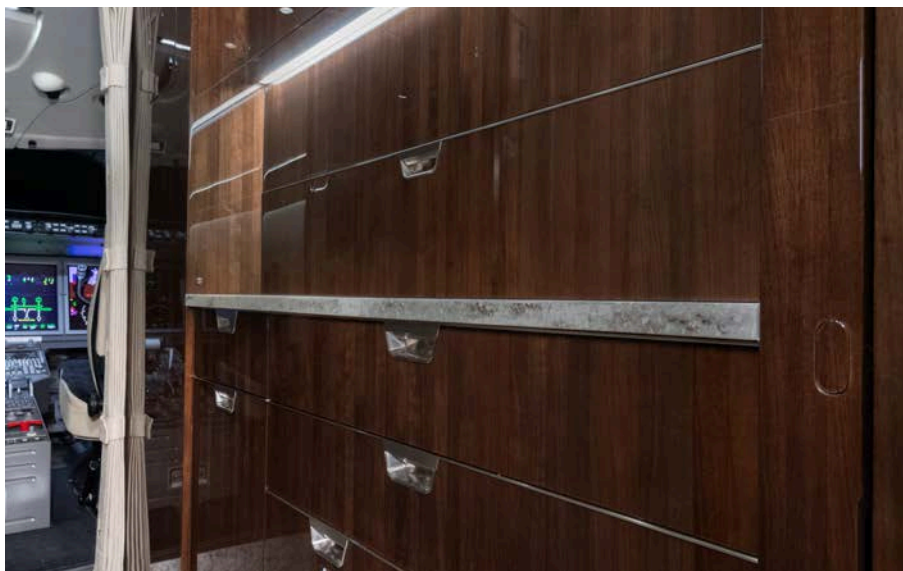
- Brand NEW aircraft! Delivered on 6/30/25
- Available for immediate delivery
- Many desirable options that include
 - ViaSat Ka-Band High Speed Internet
 - SmartRunway and SmartLanding
 - Datalink Connectivity
 - FANS 1/A+ and Iridium SATCOM/ACARS Communications
 - Enhanced Map Overlays



2025 Bombardier Challenger 3500 S/N 21062



2025 Bombardier Challenger 3500 S/N 21062



2025 Bombardier Challenger 3500 S/N 21062

Status	Time as of January 28, 2026
Total Time	58 Hours
Landings	23

Engines	Honeywell HTF7350	
	# 1	# 2
Times Since New	58.0	58.0
Cycles Since New	33	30
Serial Number	P145377	P145378
Notes	Engines Enrolled on Honeywell MSP Gold	

Weights

Max Ramp Weight	40,750 Lbs
Max Landing Weight	34,150 Lbs
Empty Weight	23,973 Lbs
Max Take-Off Weight	40,600 Lbs
Max Zero Fuel Weight	28,200 Lbs

APU	APU - Honeywell 36-150(BD)
Times	50.3
Serial Number	P-1152
Notes	APU Enrolled on Honeywell MSP Gold

Capabilities

ADS-B Out	RNP 4 / 10
WAAS / LPV	BRNAV / PRNAV
RVSM	8.33 Spacing
MNPS	FM Immunity
NAT HLA	

2025 Bombardier Challenger 3500 S/N 21062

Avionics & Cockpit

- **Avionics:** Collins Aerospace Pro Line 21 Advanced
- **Flight Displays:** Four large-format high-resolution Active Matrix Liquid Crystal Displays
- **Flight Guidance Computer:** Dual Collins FGC
- **Flight Management System:** Dual Collins FMS with WAAS / LPV
- **Global Positioning System:** Dual Collins GPS with SBAS
- **Intertial Reference System:** Dual Collins IRS
- **Autothrottle:** Yes
- **Synthetic Vision:** Yes
- **Integrated Flight Information System:** Dual IFIS
- **Communications:** Triple Collins Transceivers
- **Navigation:** Dual Collins Navs
- **Control Display Unit:** Dual Collins CDU
- **Cockpit Voice Recorder:** L3 Harris FA2100 CVR
- **Flight Data Recorder:** L3 Harris FA2100 FDR
- **Aircraft Data Computer:** Dual Collins Air Data Computers
- **Electronic Integrated Standby Instrument:** Yes
- **Automatic Direction Finding:** Single Collins ADF
- **Distance Measuring Equipment:** Dual Collins DME
- **Transponders:** Dual Collins Mode S Transponders w/ ADS-B Out
- **Traffic Alert and Collision Avoidance System:** Collins TCAS II with Change 7.1 and ADS-B Out
- **Weather Radar:** Multiscan Weather Radar



- **Terrain Awareness Warning System:** Honeywell EGPWS with SmartRunway and SmartLanding Option
- **Radio Altimeter:** Collins Radio Altimeter
- **Aircraft Health Management System:** Bombardier Smart Link Plus AHMS
- **Maintenance Diagnostic Computer:** Yes
- **Emergency Locator Transmitter:** Artex C406-N ELT w/ navigation interface
- **SATCOM:** Iridium
- **High Frequency Radio:** Dual Collins HF Transceiver
- **Datalink & Selective Calling (SELCAL) System:** Yes

2025 Bombardier Challenger 3500 S/N 21062

Additional Items

- ViaSat Ka-Band High Speed Internet
- SmartRunway and SmartLanding
- Datalink Connectivity
- FANS 1/A+ and Iridium SATCOM/ACARS Communications
- Enhanced Map Overlays
- Handrail Veneer
- Forward wardrobe
- Stone flooring

Cabin Entertainment

- A Personal Electronic Device (PED) centric Cabin Management System (CMS). Control of the CMS happens through a dedicated app on the PED or using the Galley Control Panel.
- One 24" 4K Bulkhead Mounted LCD Monitor w/ Flight Information
- In-Flight Entertainment (IFE) System includes worldwide maps, audio cabin briefing, 4K distribution capability and a library for locally stored movies / music

Exterior

- Overall Matterhorn White w/ Gold and Silver Accent Stripes



Cabin Communications & Amenities

- ViaSat Ka-Band High Speed Internet
- Iridium SATCOM
- Satcom Direct Gigabit SDR Router
- Four Charging Qi Charging Pads
- USB Charging Ports

2025 Bombardier Challenger 3500 S/N 21062

Maintenance Programs & Inspections Status

- Operated & Maintained per FAR §91
- Date of Manufacture: 2025
- Certification Date: June 13, 2025
- Manufacturer Aircraft Warranty Expires June 30, 2030 or 5,000 flight hours
- Manufacturer Completions Warranty Expires June 30, 2027
- Maintenance tracked by CAMP
- Engines Enrolled on Honeywell MSP Gold (with Engine Nacelle and Thrust Reverser Coverage Options)
- APU Enrolled on Honeywell MSP Gold
- Airframe Enrolled on Bombardier SmartParts Preferred (with Cabin & Landing Gear Options)

Periodic Inspections

Next Due Date (Date/Hours)

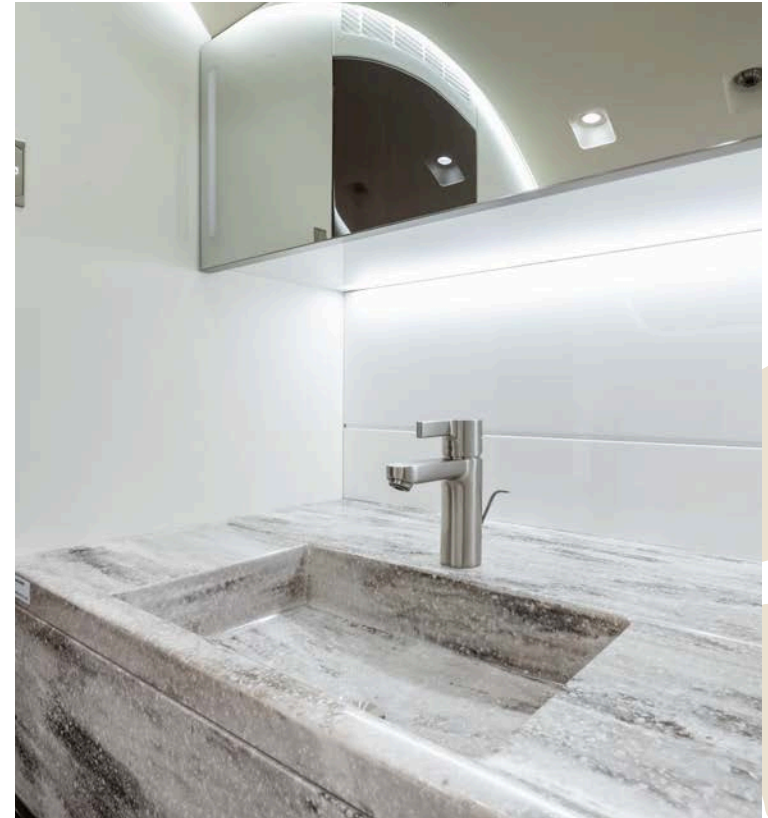
12 Month	6/27/2026
24 Month	6/27/2027
36 Month	6/27/2028
48 Month	6/27/2029
96 Month	6/27/2033
192 Month	6/27/2041
400 Hour	400
600 Hour	600
800 Hour	800
1200 Hour	1200
1600 Hour	1600
2400 Hour	2400
3200 Hour	3200
4200 Hour	4200
9600 Hour	9600

2025 Bombardier Challenger 3500 S/N 21062

Interior

The 9-passenger executive interior is configured as follows:

- **Aircraft Entry Area:** The aircraft galley is installed in the forward area of the aircraft and includes ample storage, two universal GFCI-protected outlets, a microwave oven, a dedicated ice drawer, a solid surface countertop with a matching pull-out work surface, a large waste drawer, and numerous soft-closing storage drawers or compartments. The forward area is separated from the main cabin by a manually operated sliding door.
- **Cabin:** Eight individual seats arranged in a double four-place club (forward and aft) with pedestal-mounted seats that can swivel, recline, track and are berthable. The forward-facing seats provide leg rest capability. Fold out tables with ample work area. Side ledges have multipurpose areas for each pedestal seat location that include USB-C charging ports. CMS control is available through a dedicated app on a personal electronic device or via the galley control panel.
- **Aft Lavatory:** Lavatory with flushing toilet, sliding privacy doors, and a belted passenger seat. It also includes storage, a vanity cabinet with sink and single lever faucet. Access to the pressurized, heated baggage compartment is via a bulkhead door that swings into the lavatory.





Michael J. Mikolay

Founder & CEO

E. info@mikolayjet.com

O. +1 203-350-4040